



**COPADATA**  
do it your way



## About COPA-DATA

**1987**   
founded in Austria

 **100%**  
independent  
family business

 **135,000**  
installed zenon systems  
worldwide

**11**  **Subsidiaries**




**17**  **Distributors**

**4** key industries  


more than   
**220** Partners

 **Local**  
Sales Support in  
**47** countries

### The World of Ergonomics

-  COPA-DATA Headquarters
-  COPA-DATA Subsidiaries
-  COPA-DATA Distributors



## The new functionalities awaiting you in 2018

In spring 2018, a new major version of zenon is released. With zenon 8.00, a whole host of innovative functionalities await you. Let yourself be inspired by the new zenon generation and take a look at the highlights here.

### Fast Facts

- ▶ New analysis options thanks to shift filters
- ▶ Comprehensive optimizations of the Extended Trend module
- ▶ More flexible licensing system
- ▶ Performance improvements
- ▶ New modules for grid calculations

### Alternative Data Points

If invalid data is sent by the PLC, the operator experiences a loss of functionality, which can mean they are unable to carry out their work. The Alternative Data Points counteract invalid data in your archives and ensure increased robustness. Values from PLCs can be recorded redundantly

or via various communication channels. Alternate values generated by means of simulation in the event of data loss increase the validity of the recorded data.

## Optimizations in Extended Trend



Thanks to the numerous new features and optimizations in Extended Trend, project creators and users benefit from enhanced usability. Engineering in particular has become much more efficient, as index substitution has been enabled for curve variables, for example. Graphical representations of archived data can be engineered faster and more intuitively – the engineer is provided with the best-possible assistance when creating effective diagrams.

It is now even easier to present users with precisely the information that is of interest to them. Variables can be dragged & dropped in the diagram window, providing users with a better overview more quickly. A configurable pop-up screen displaying the trend delivers quick information about a specific variable.

## Production analysis based on shift data



Process data in the Alarm Message List, the Chronological Event List, or even in Trends and Reports can be filtered

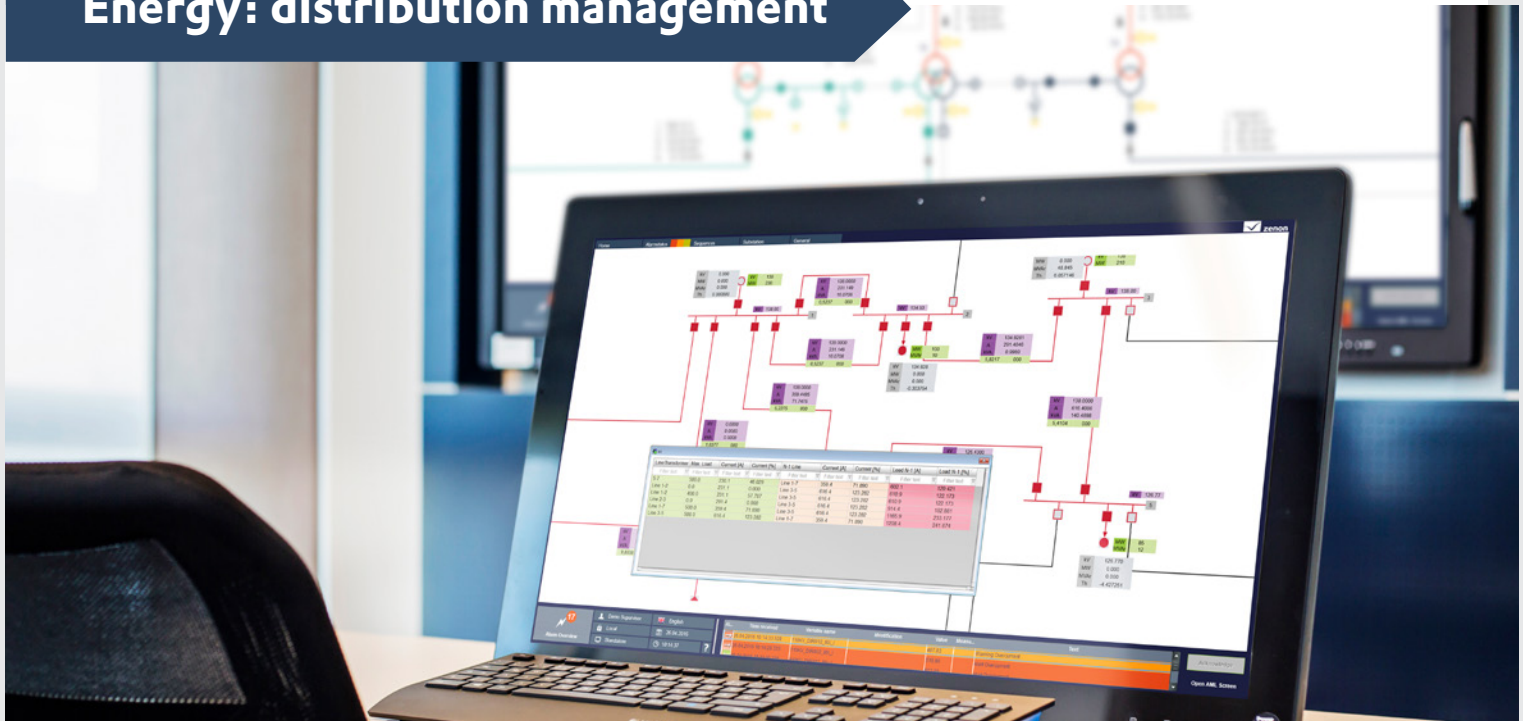
based on shifts. This enables informative production analyses including shift data to be carried out.

## Expansions in Batch Control

Master recipes in zenon Batch Control can now be released automatically. A recipe can be created in an external program, then automatically imported and released for production. This allows a fully automated workflow to be established. Touch operation for batch recipes has also been significantly enhanced.



## Energy: distribution management



With respect to energy automation, further functionalities relating to a Distribution Management System are being developed in zenon. The two modules – Load Flow Calculation and State Estimator – enable grid calculations in




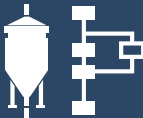


the context of energy distribution. These can then be used to derive further calculations, such as topologic interlocking from the grid calculation or the (n-1) calculation.

## Usability when creating screens and symbols

Screens and symbols can now be created faster and more intuitively. In particular, the first steps for new zenon users are simplified.



## An overview of further new features

<b>Performance improvements</b> 	<ul style="list-style-type: none"><li>▶ Increased performance when modifying and distributing values</li><li>▶ Secure, continual value supply for archives with cyclic recording</li><li>▶ Runtime monitoring of driver connection</li><li>▶ Increased performance when starting up Standby Server</li></ul>
<b>Extended Trend</b> 	<ul style="list-style-type: none"><li>▶ Variable selection dialog redesigned</li><li>▶ Automatic selection of relevant archive in Runtime</li><li>▶ Graphs, axes, and diagram support styles</li><li>▶ Improved representation of axes</li><li>▶ Zoom function with the mouse wheel in diagram window in Runtime</li></ul>
<b>zenon Process Recorder</b> 	<ul style="list-style-type: none"><li>▶ Playback of project evolution in replay mode</li></ul>
<b>Batch Control</b> 	<ul style="list-style-type: none"><li>▶ Configuration of modifiable limits</li><li>▶ Predefined parameter values to simplify use of Batch Control</li><li>▶ Optimizations for touch operation</li><li>▶ And much more</li></ul>
<b>User administration</b> 	<ul style="list-style-type: none"><li>▶ Access to Active Directory, even if the PC is not in the domain</li></ul>
<b>Licensing</b> 	<ul style="list-style-type: none"><li>▶ License manager as new administration tool for online and offline management of licenses</li><li>▶ Remote licensing</li><li>▶ More than one licenses can be activated at once</li><li>▶ Redundant dongle licensing</li><li>▶ Several licenses on one dongle</li></ul>

To find out more about the additional new features in zenon 8.00, please also take a look at the release notes.

## Support & Training

### SUPPORT

In zenon there's an extensive help included. Just press F1 while using the zenon Editor or choose "Help" from the Menu. For further support please visit [www.copadata.com/support](http://www.copadata.com/support)

Here you can also find a FAQ Knowledgebase and the COPA-DATA forum.



### TRAINING

Use zenon optimally. COPA-DATA training offers essentials and tailored courses that address specific requirements, helping you become an expert.

Book your trainings at

[www.copadata.com/training](http://www.copadata.com/training)

